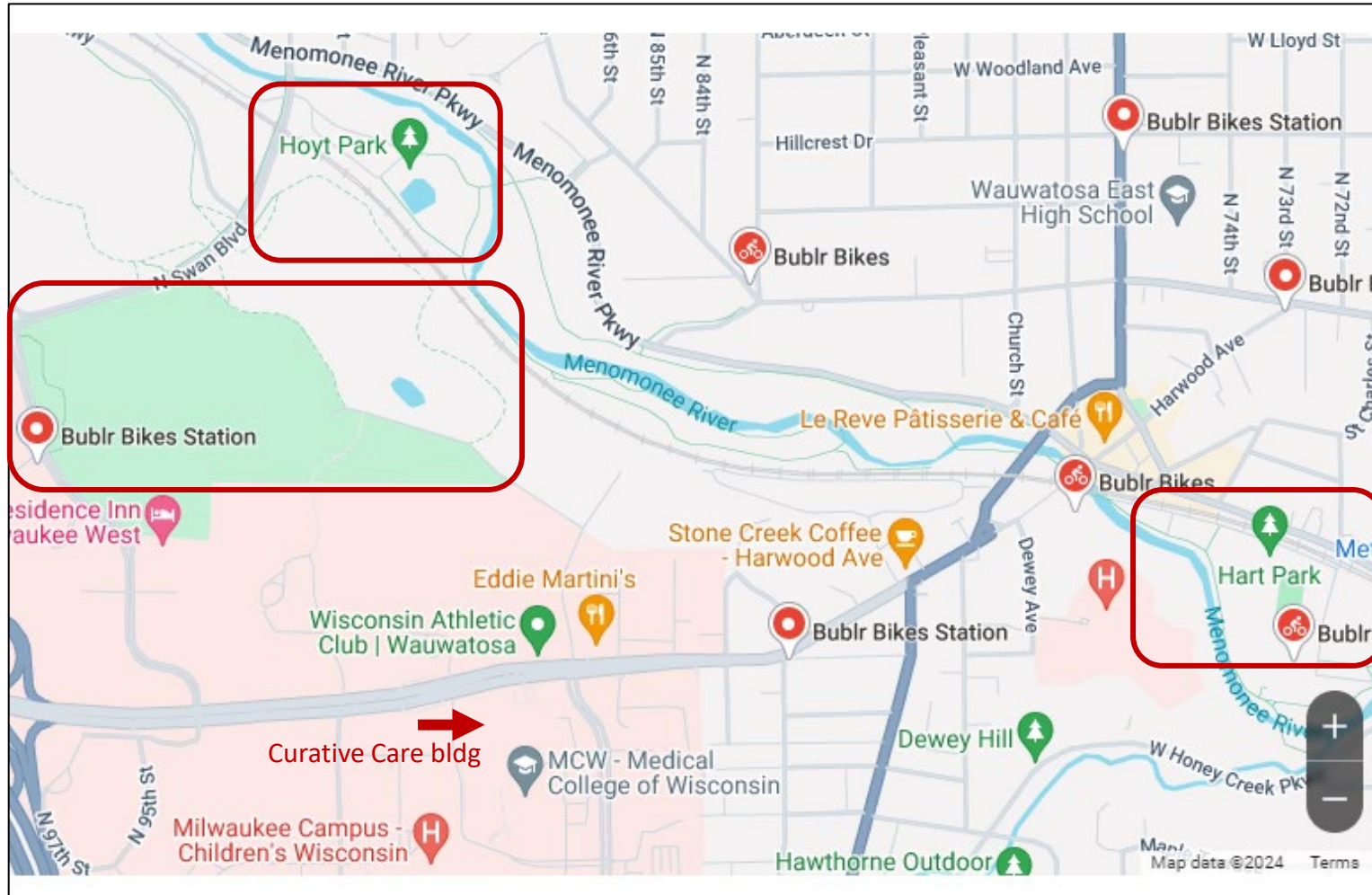


Some ideas for things to do around Wauwatosa and downtown Milwaukee



Bublr bike rental kiosks near campus

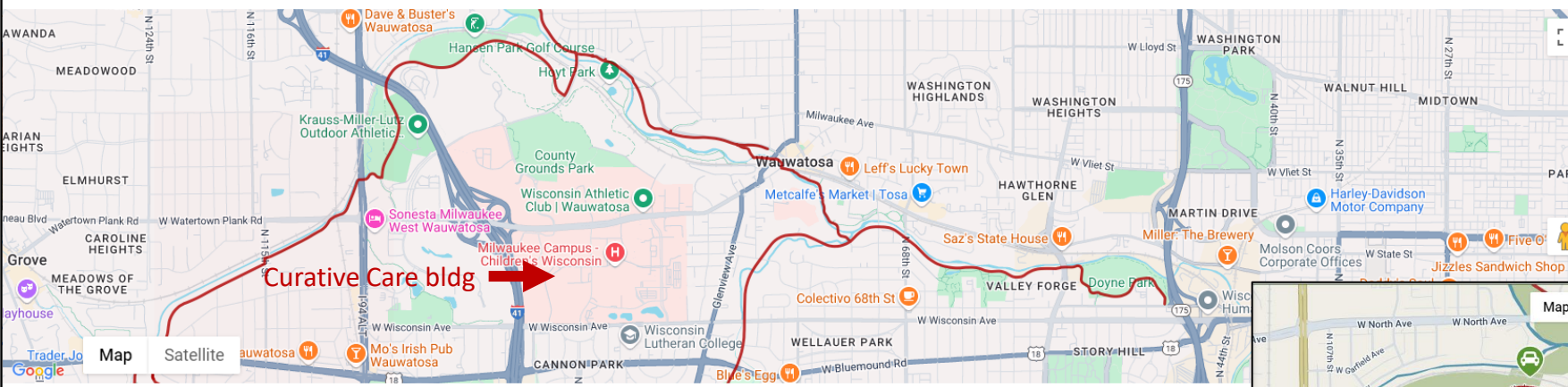
https://www.google.com/search?q=bublr+bike+locations+tosa&rlz=1C1GCEU_enUS858US858&oq=bublr+bike+locations+tosa&gs_lcrp=EgZjaHJvbWUqBggAEEUYOzIGCAAQRg7MgoIARAAGKIEGikFMgoIAhAAGIAEGKIEMgoIAxAAGIAEGKIEMgoIBBAAGIAEGKIE0gEINTYyM2owajeoAgCwAgA&sourceid=chrome&ie=UTF-8

It is easy to walk or bike between Hoyt Park and Hart Park in Wauwatosa

Off Discovery Parkway to the north of Curative is a county park with walking trails

Wisconsin Trails and Maps

★★★★ 1780 Reviews

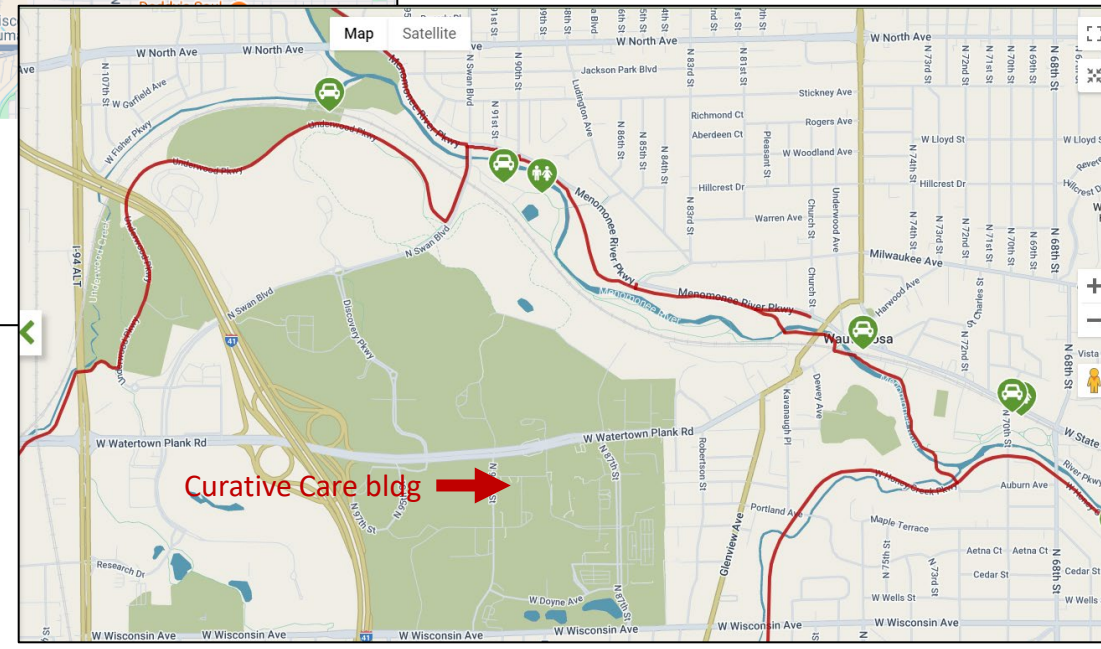


Looking for the best trails around Wisconsin? Explore the best rated trails in Wisconsin, whether you're looking for an easy walking trail or a bike trail like the Oak Leaf Trail (Route of the Badger) and Elroy-Sparta State Trail. With more than 186 trails covering 2372 miles you're bound to find a perfect trail for you. Click on any trail below to find trail descriptions, trail maps, photos, and reviews.

Go to:

- Bike Trails
- Running Trails
- Walking Trails
- Dog Walking Trails

Oak Leaf hiking/biking trail runs along the Menomonee River
<https://www.trailink.com/state/wi-trails/>



[Home](#) / [Routes](#) / Oak Leaf Trail, Menomonee River Line (WI)

Route: Oak Leaf Trail, Menomonee River Line (WI)

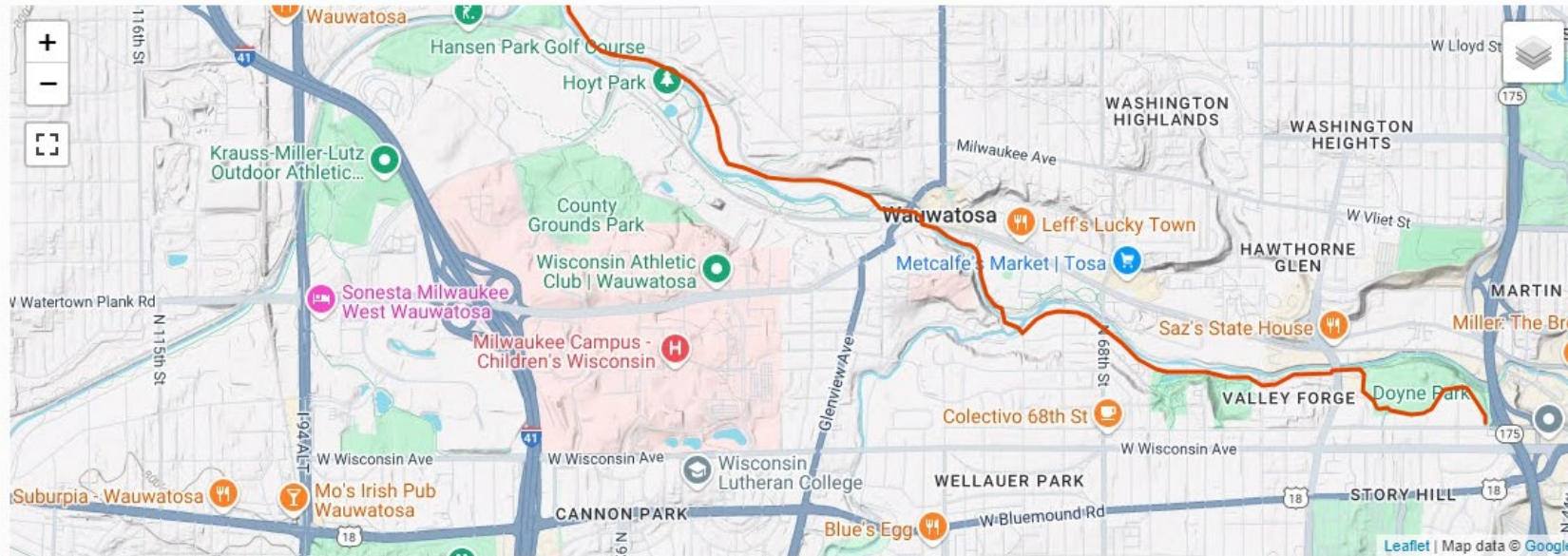
Submitted by Moo Moo Da Cow on Sun, 10/17/2021 - 03:03pm

Wisconsin, US

Distance: 14.93 mi

Vertical Gain: 265 ft

The **Oak Leaf Trail** is a multi-use trail system with over 135 miles of trail for cycling, roller blading, walking, birding and running around Milwaukee County. Nearly a quarter of the trail hugs the beautiful shores of Lake Michigan. The trail system is mostly smooth asphalt, with dozens of easily accessed connections that take you just about ... [Read more](#) ▼

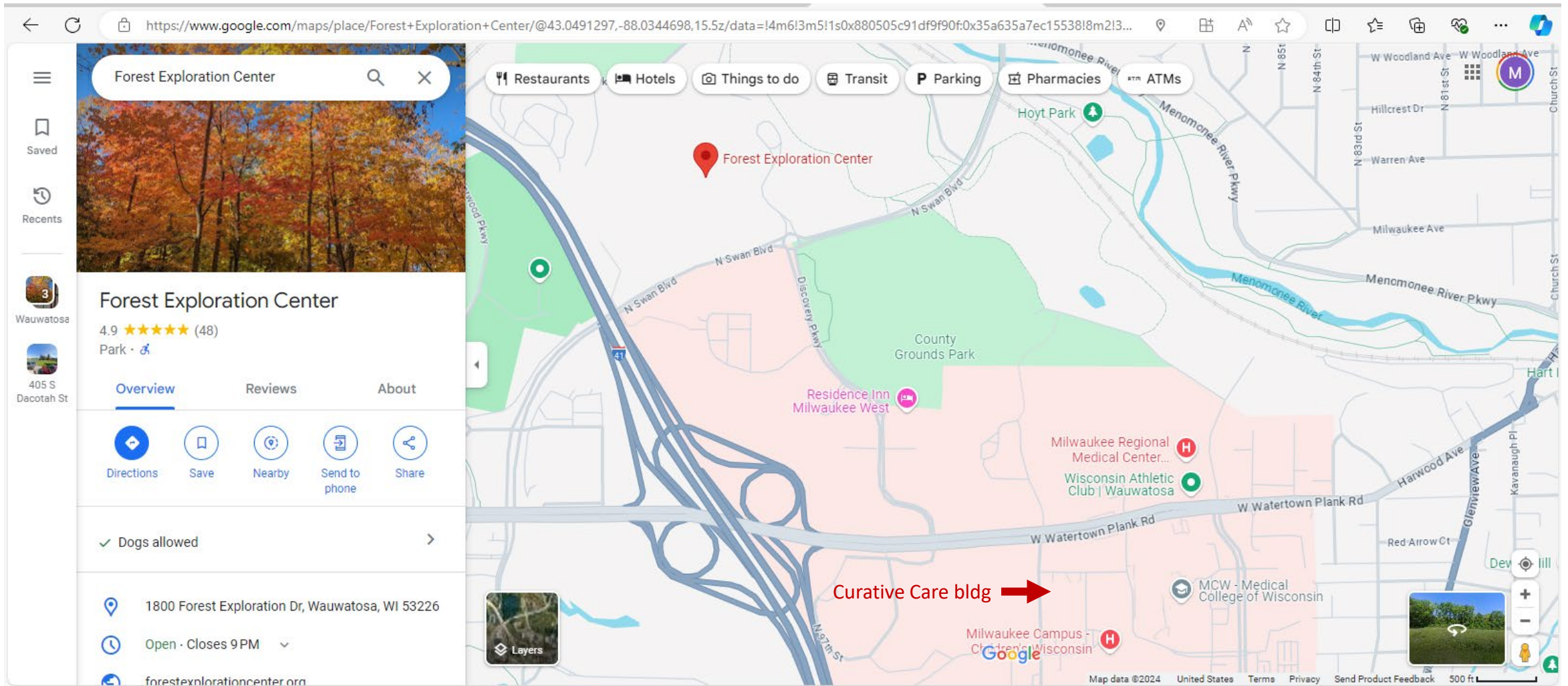


GPS Track:

Oak Leaf Trail (Menomonee River Line).gpx

53.47 KB

<https://fastestknowntime.com/route/oak-leaf-trail-menomonee-river-line-wi>



[FOREST EXPLORATION CENTER – Home](https://www.forestexplorationcenter.org/)

<https://www.forestexplorationcenter.org/>

[Things To Do - FOREST EXPLORATION CENTER](https://www.forestexplorationcenter.org/things-to-do.html)

<https://www.forestexplorationcenter.org/things-to-do.html>



<https://www.wauwatosavillage.org/shopping>

SHOPPING IN THE VILLAGE

From the latest styles to delicious specialty foods to basic necessities, Village shopping has what you need.



- | | | | |
|---------|--------------|-----------|--------------------|
| APPAREL | HOME & DECOR | SPECIALTY | GROCERY & PHARMACY |
|---------|--------------|-----------|--------------------|

7 - [The Flannel Fox](#)

2 - [The Flower Lady](#)

1 - [Little Red Store/ Wauwatosa Historical Society](#)

20 - [Outpost Natural Foods](#)

9 - [Maggie Jewelry and Metals](#)

7 - [The Flannel Fox](#)

21 - [Metro Market](#)

Results for Milwaukee, WI 53226 · Choose area

<https://www.mayfairmall.com/en/> , <https://mayfaircollection.net/>

Places :



Mayfair

4.2 ★★★★★ (9.4K) · Shopping mall

2500 N Mayfair Rd · (414) 771-1300

Open · Closes 8 PM

"You can get a full **shopping** experience here and the food court is amazing."



The Mayfair Collection

4.3 ★★★★★ (3K) · Outlet mall

11500 W Burleigh St · (414) 386-5150

Open · Closes 9 PM

"Good deals and a variety of **shops** including eateries."



Colectivo Swan Blvd.

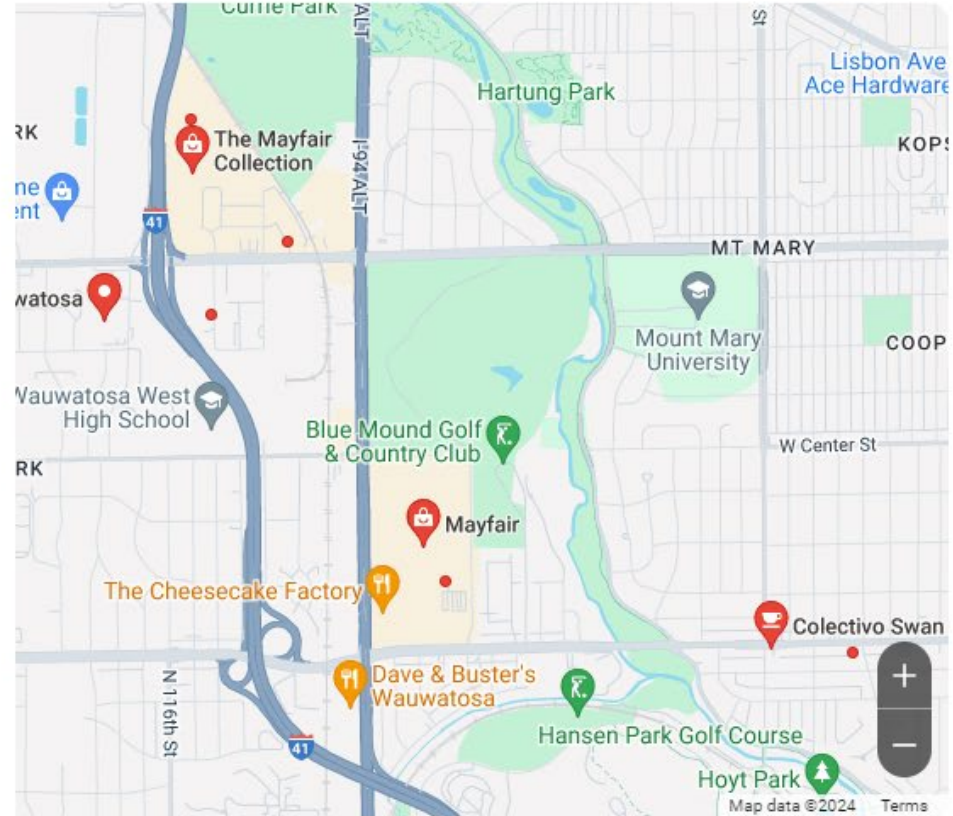
4.5 ★★★★★ (1.1K) · \$1-10 · Cafe

9125 W North Ave Suite 101 · (414) 259-7948

Open · Closes 6 PM

"Restrictive parking and multiple items are always unavailable."

More places →



Other ideas for things to do

Milwaukee County Zoo	Very near MCW; open 9:30a-4:30p every day
Milwaukee Art Museum	Downtown/lakefront location; open until 8pm on Thursday
Harley Davidson Museum	Downtown location; open daily 10:00-5:00
Nine Below - haunted mini golf	no reservations, open until 11pm
Milwaukee Public Museum	Downtown location; open 10:00a-5:00p
Mitchell Park horticultural domes	Closer to downtown; \$9.00/person; 9a-5p M-F, 9a-4p SS

Places to eat/socialize

Blue's Egg	breakfast, not far from MCW
Ally's Powerhouse	breakfast, opens 7:00 am M-F and 8:00 am Sat.
Lakefront Brewery	great beer, great Friday fish fry, reasonable prices
Milwaukee Public Market	open until 8:00 pm Friday, 8:00a-6:00pm Saturday
SafeHouse Milwaukee	fun experience, decent food. No, I won't tell you the passphrase!
Mo's Irish Pub	close by, pub food, good beer
Cheesecake Factory	close by, big menu, decent prices
Eddie Martini's	walking distance (across Watertown Plank rd) from MCW, steak/seafood, need reservation
Buckabatoon Tavern & Supper Club	walking distance (<1 mile) from MCW. pub food
Le Reve Pâtisserie & Café	walking distance (~1 mile) from MCW. french bistro & pastries, bar
The Ruby Tap	walking distance (~1 mile) from MCW. wine bar